

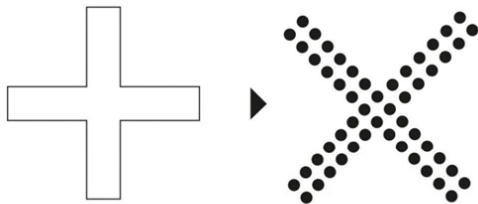
The background of the image features a series of overlapping, flowing waves in various shades of blue and purple. These waves originate from the bottom left and curve upwards and to the right, creating a sense of movement and depth. The colors transition from a deep blue on the left to a lighter, more ethereal purple on the right.

# Bexen cardio

Ready for life

# A COOPERATIVE MOVEMENT

Bexen cardio is 1 out of 98 cooperative companies of **Grupo Mondragon**, in the Equipment Business Area, same as Orbea, Dikar or Eredu and many others.



ADDING TO MULTIPLY

# MONDRAGON CORPORATION

MONDRAGON Corporation is the embodiment of the co-operative movement that began in 1956, the year that witnessed the creation of the first industrial cooperative in Mondragon town; its business philosophy is contained in its Corporate Values:

- Cooperation.
- Participation.
- Social Responsibility.
- Innovation.

Nowadays, **MONDRAGON** gathers around 100 independent self-driven cooperatives and is today the foremost Basque business group and the tenth largest in Spain.



## 4 BUSINESS AREAS



Finance



Industry

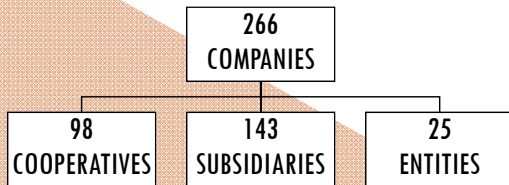


Distribution



Knowledge

## WE ARE A HIGHLY DIVERSIFIED GROUP



## HIGHLIGHTS



TOTAL REVENUE  
11.280M€



JOBS  
80.818



NET INVESTMENTS  
451M€



EBITDA  
1.021M€

# 40 YEARS OF HISTORY



Bexen cardio

Established in  
**1980** Bexen started  
up the design,  
manufacturing and  
sales of electro-  
medical equipment.

In 1990 Bexen  
specialized in the  
**defibrillation range**

In 1998 Bexen was  
firstly **CE certified**

In 2002 Bexen put to  
market its 1st  
biphasic AED with ECG  
analysis  
algorithm; **REANIBEX 200**

In 2012 Bexen  
changed its  
trademark  
to **Bexen cardio**.

# BEXEN CARDIO TODAY

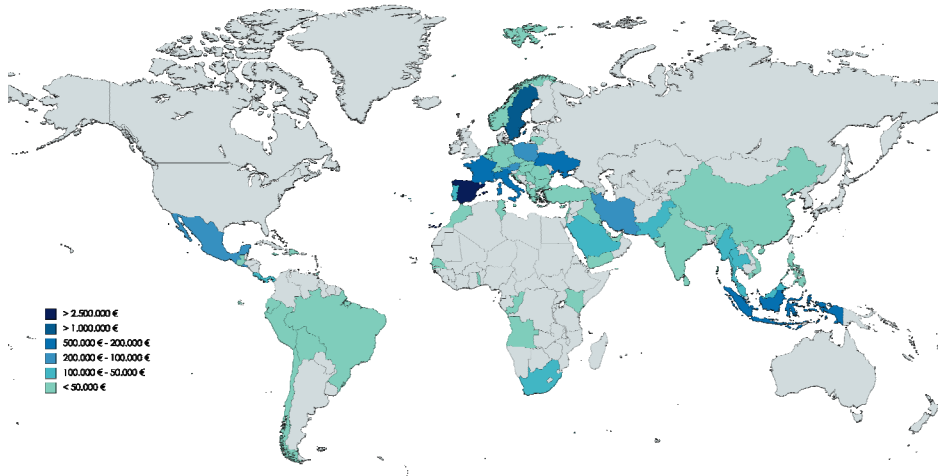
With 40 years of history saving lives, we are **the only Spanish manufacturer of defibrillators** with a large presence in the international market.

We are a cooperative company specialized in defibrillators. Our mission is the continuous development and innovation and **taking care of people.**



# WORLDWIDE PRESENCE

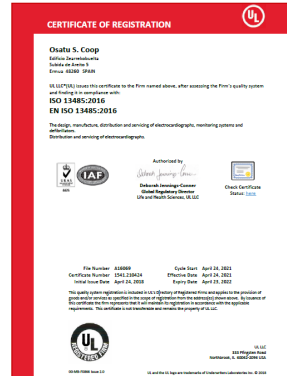
More than 80% of our turnover is generated internationally, based on an Homologated Distributors Network in more than 100 countries.



# QUALITY COMMITMENT

Bexen cardio products are top quality driven and comply to major international quality standards and certifications as:

CE, ISO 13485: 2016





# OUR KNOWLEDGE

Innovation is key in our future, so 20% of our turnover is yearly invested in R&D.

When developing new products or upgrading existing ones, we work on multidisciplinary team bases in collaboration to Engineering Centers, Hospitals and Universities among others.



# TECHNOLOGICAL PARTNERS

---

Pulse Oximetry



Non invasive Blood Pressure



Capnography



---

Invasive Pressure



Interpretation



Electrodes



---

Patient cables



# PRODUCT RANGE

## PUBLIC USE



**REANIBEX 100**  
AED  
*New!*



## EMERGENCY



**REANIBEX 300 Manual**  
AED with Manual  
override option



**REANIBEX 500 EMS**  
Multi-parameter Monitor  
Defibrillator Manual with  
AED

## HOSPITAL



**REANIBEX 700**  
Monitor Defibrillator  
Manual with AED



**REANIBEX 800**  
Modular and  
Multi-parameter  
Monitor  
Defibrillator



# OUR AED

Portable and lightweight, specifically designed for first response to patients suffering from cardiac arrest.  
Simple and intuitive, gives clear guidance during CPR according to the AHA protocol.



# OUR EMERGENCY EQUIPMENT

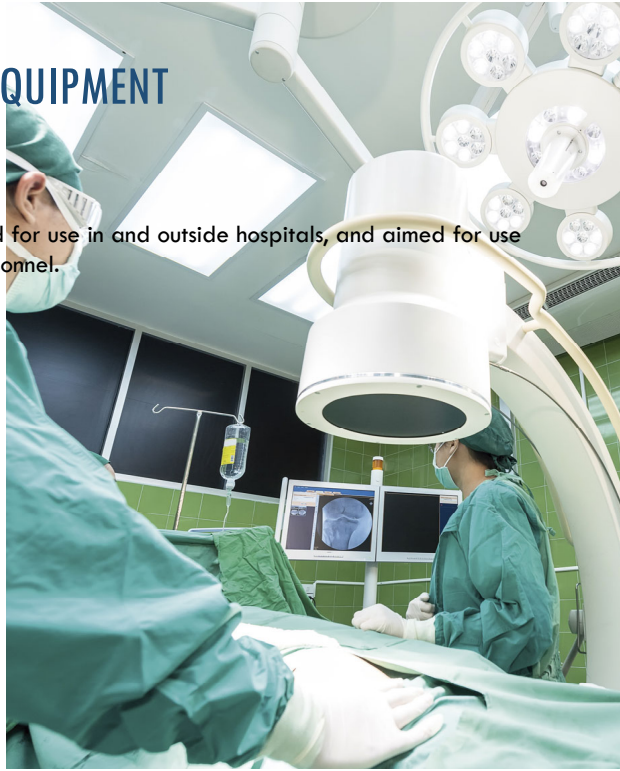
Equipment designed to make emergency interventions easier.  
Highly intuitive devices for fast use with the most advanced features and heavy duty design.





# OUR HOSPITAL EQUIPMENT

Multi-parameter Monitor Defibrillators are specially designed for use in and outside hospitals, and aimed for use by medical personnel.



# Bexen cardio



+34 943 170 220



[info@bexencardio.com](mailto:info@bexencardio.com)



[www.bexencardio.com](http://www.bexencardio.com)



[LinkedIn](#)



[Youtube](#)



[Instagram](#)



[Twitter](#)

Osatu, S. Coop. "Edificio Zearrekobuelta" Subida de Areitio 5 - 48260 Ermua (Bizkaia) Spain